

New technological heart for laser welding machines

LPKF Laser & Electronics AG revolutionizes laser plastic welding

LPKF has developed a powerful processing unit PU-W for the latest generation of laser welding machines - the heart of the systems.

With the new PU-W, the machines will be even more flexible in their use and more powerful - and will open up an even higher level of efficiency.

The LPKF Processing Unit Welding has a calibrated laser spot diameter which is continuously adjustable between 2.2 and 4 mm. The laser beam profile developed in-house ensures an outstanding homogenous energy distribution in the laser spot. This results in shorter cycle times at the same power rate; the larger process window facilitates project setup and benefits the quality of the welding result. The fact that the optics unit does not have to be modified for new projects raises machine utilization and further increases efficiency.

The fully digital scanner of the PU-W works precisely with only minimal drift. By calibrating the scanning field, an adaptive transfer of welding contours between different systems worldwide is now easily possible.

Hardware and software are ideally matched to each other and make machine use easier for the application engineer. CAD data is imported directly; process parameters and contour adjustments can be set up quickly and easily.

LPKF's laser specialists have also worked on other important details of the machine. For example, infrared illumination ensures a visible welding area even with colored overlays. By pyrometry, process monitoring is also possible.

Fig.

Contact:

Cordula Krause-Widjaja
cordula.krause-
widjaja@lpkf.com
Tel. +49 (5131) 7095-1327
Fax +49 (5131) 7095-90

LPKF WeldingQuipment GmbH

Alfred-Nobel-Str. 55-57
90765 Fürth
Germany

Local court Fürth: HRB 14026

» www.lpkf-laserwelding.com
» www.lpkf.com

General Manager

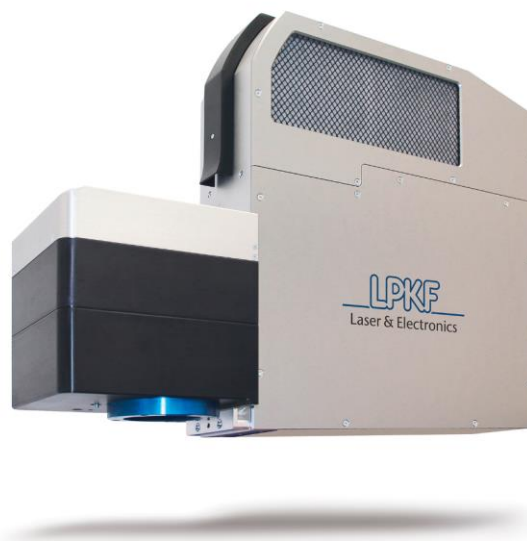
Markus König
Lars Ederleh

Member of LPKF Group

Shares: Prime Standard
ISIN 0006450000

Reproduction free of charge,
copy requested

» [Other press releases](#)



The Processing Unit Welding (PU-W) developed especially for plastic laser welding makes LPKF's laser welding systems even more powerful, precise and flexible.

About LPKF

LPKF Laser & Electronics AG manufactures machines and laser systems used in electronics fabrication, medical technology, the automotive sector, and the production of solar cells. Around 20 percent of the workforce is engaged in research and development.