

## PCB prototyping the easy way

### LPKF presents equipment at embedded world 2020

**The development of new products requires iterations in the shortest possible time. LPKF Laser & Electronics' systems offer all the possibilities for PCB prototyping and micro-material processing to achieve the desired results quickly and easily. The company will be demonstrating how this is possible at embedded world in Nuremberg from February 25 - 27 in Hall 3, Stand 249.**

LPKF equipment can be used to produce both simple and complex printed circuit boards and multilayers. Users of the tabletop prototyping systems can produce and test PCBs in just one day - without the need for chemical etching which can pose a health or environmental risk.

When using in-house equipment for development environments, designs remain confidential. Corrections can be implemented quickly and conveniently in the company's own laboratory. This option shortens the duration of processes in research and development – and thus accelerates the market launch.

LPKF's PCB prototyping systems work directly with the CAD data. The software is intuitive to use. This means that PCBs can be structured, drilled, through-hole plated and separated without extensive training. Multilayer production is also possible. And finally, LPKF systems can also be used to assemble printed circuit boards: from prototypes to small batches. All SMT production processes and methods are also available for in-house PCB prototyping – adapted to the requirements of the electronics laboratory.

#### Contact:

Cordula Krause-Widjaja  
cordula.krause-  
widjaja@lpkf.com  
Tel. +49 (0)5131 7095-1327  
Fax +49 (0)5131 7095-90

**LPKF**  
**Laser & Electronics AG**  
Osteriede 7  
D-30827 Garbsen  
www.lpkf.de

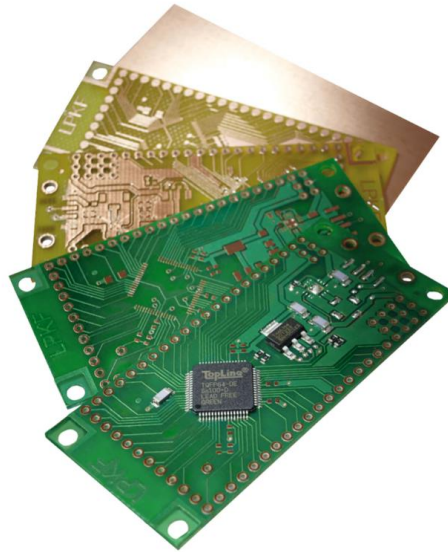
**Board of**  
**Managing Directors**  
Dr. Goetz M. Bendele (CEO)  
Christian Witt (CFO)

**Shares**  
Prime Standard  
ISIN 0006450000

Print free of charge,  
copy requested

» [Other press releases](#)

Product and brand names are trademarks of LPKF Laser & Electronics AG, registered among others at the US Patent and Trademark Office: LPKF® and the company logo, # 2,385,062 and # 2,374,780; Solarquipment®, # 3,494,986; ProConduct®, # 3,219,251; Allegro®, # 3,514,950.



**Figure:** The development steps of a board – realized with LPKF equipment

#### **About LPKF**

LPKF Laser & Electronics AG is a leading provider of laser-based solutions for the technology industry. Laser systems from LPKF are of central importance for the manufacturing of printed circuit boards, microchips, automotive parts, solar modules and many other components. Founded in 1976, the company has its headquarters in Garbsen near Hanover and operates worldwide through subsidiaries and agencies. Around 20 percent of the workforce is engaged in research and development.