

## Solution for foldable glass displays

### LPKF enables fatigue-free folding of glass

**Contact:**

Cordula Krause-Widjaja  
cordula.krause-widjaja@lpkf.com  
Tel. +49 (0)5131 7095-1327  
Fax +49 (0)5131 7095-90

**LPKF  
Laser & Electronics AG**  
Osteriede 7  
D-30827 Garbsen  
www.lpkf.de

**Board of  
Managing Directors:**

Dr. Goetz M. Bendele (CEO)  
Christian Witt (CFO)

**Shares:**

Prime Standard  
ISIN 0006450000

Print free of charge,  
copy requested

» [Other press releases](#)

Foldable displays are the newest trend in smartphone technology. Current folding displays are made of plastics and are therefore prone to scratches, wrinkles and premature breakdown and malfunction. Conventional smartphone displays do not have these problems because they are made up of at least two layers of tempered glass. Due to the glass, however, these displays cannot be folded easily. LPKF Laser & Electronics AG presents a solution for this problem at this year's SID Display Week.

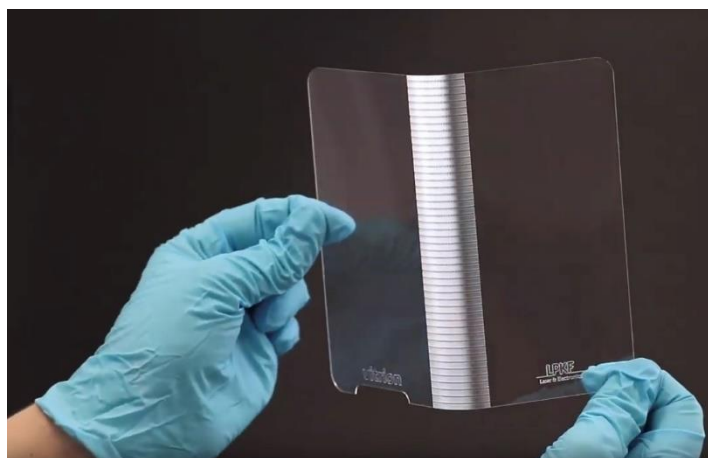
With glass displays, the glass facing the viewer can be made as thin and foldable as desired. However, this is not as easy with the thicker back of the display, the so-called backplane. Based on its innovative LIDE technology, LPKF has developed a concept for foldable glass displays.

LIDE enables the economical production of microstructures in glass without creating microcracks or stress in the material. With appropriately designed microstructures, glass can be bent and folded fatigue-free without surface defects. LPKF provides an impression of this in a video:

<https://www.vitrion.com/#c7479>

The SID Display Week is the world's largest display conference and takes place this year from 14 - 17 May 2019 in San Jose (California). LPKF will present the technology from 14 to 16 May in the i-Zone, the innovation exhibition at SID Display Week.

Product and brand names are trademarks of LPKF Laser & Electronics AG, registered among others at the US Patent and Trademark Office: LPKF® and the company logo, # 2,385,062 and # 2,374,780; Solarquipment®, # 3,494,986; ProConduct®, # 3,219,251; Allegro®, # 3,514,950.



**Fig.:** Foldable glass display backplane processed with LIDE

**About LPKF**

LPKF Laser & Electronics AG manufactures machines and laser systems used in electronics fabrication, medical technology, the automotive sector, and the production of solar cells. Around 20 percent of the workforce is engaged in research and development.