



LPKF MultiPress S Bench-top hydraulic press for multilayer PCBs

- Very fast process
- Bonds rigid and flexible substrates
- Perfect for RF-materials
- Uses preprogrammed or user programmed profiles

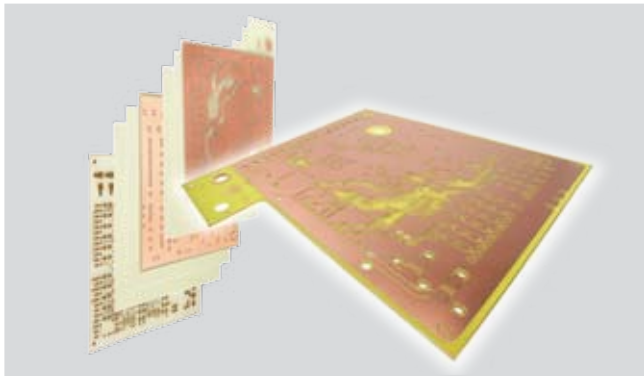
Multilayer press for standard and RF-multilayer boards

The LPKF MultiPress S bonds multilayer circuits of all common rigid and flexible substrates. It delivers equal pressure on the full press plate area. With precise control of all important process parameters such as temperature, pressure and cycle times, the LPKF MultiPress S produces

regular and durable lamination. Specific process profiles with temperature peaks up to 250 °C (482 °F) can bond even RF-materials together. A powerful heating unit and efficient heat transmission for short cool-down phases reduce process times to a minimum.

Features

A menu driven LCD-display offers easy access to all important process parameters. Program up to nine different heating and pressing profiles – total process customization.



4-layer multilayer board: before and after bonding.

Operation

The MultiPress S is delivered with an automatic hydraulic press mechanism, which provides constant and reliable pressure control. The system can also be equipped with a hand pump instead of an automatic press.



Technical data	LPKF MultiPress S with automatic hydraulic press	LPKF MultiPress S with hand pump press
Part #	120736	120734
Maximum layout area	200 x 275 mm (7.8" x 10.8")	200 x 275 mm (7.8" x 10.8")
Maximum press area	229 x 305 mm (9.0" x 12.0")	229 x 305 mm (9.0" x 12.0")
Maximum pressure	286 N/cm ² at 229 x 305 mm (9.0" x 12.0")	286 N/cm ² at 229 x 305 mm (9.0" x 12.0")
Maximum temperature	250 °C (480 °F)	250 °C (480 °F)
Maximum number of layers	8 (depends on material and layout)	8 (depends on material and layout)
Pressing time	Approx. 90 min ^a	Approx. 90 min ^a
Dimensions (W/H/D)	600 x 620 x 530 mm (23.6" x 24.4" x 20.9")	600 x 620 x 530 mm (23.6" x 24.4" x 20.9")
Weight	170 kg (375 lbs) ^b	170 kg (375 lbs) ^b
Power supply	230V, 50/60 Hz, 2.8 kW	230V, 50/60 Hz, 2.3 kW
Microprocessor controlled	9 pressure/temperature/time profiles	9 pressure/temperature/time profiles
Dimensions pressure unit (W/H/D)	260 x 410 x 280 mm (10.4" x 16.2" x 11.0")	100 x 150 x 700 mm (3.9" x 5.9" x 27.6")
Weight pressure unit	15 kg (33 lbs)	5 kg (11 lbs)
Base materials	FR4, others upon request	FR4, others upon request

a depending upon Prepreg
b plus weight of hand pump or automatic hydraulic press mechanism

LPKF Laser & Electronics AG
Osteriede 7
D-30827 Garbsen
Germany

Phone +49 (0) 51 31-70 95-0
Fax +49 (0) 51 31-70 95-90

info@lpkf.de
www.lpkf.com

LPKF-Distributor